



FY24 Educational Programming

Brian Fitzgerald, Director of Education
MWOBS Annual Meeting, June 1, 2024

Mission

Mount Washington Observatory is a private, nonprofit, member-supported institution with a mission to advance understanding of the natural systems that create Earth's weather and climate.

OBJECTIVES:

- It serves this mission by maintaining a **weather** station on the summit of Mount Washington,
- performing weather and climate **research**,
- conducting innovative **science education** programs and interpreting the heritage of the Mount Washington region.

Education

K-12 Students and Teachers

- School day, afterschool visits
- Field Trips
- Virtual Programs
- Summer Programming
- Teacher Professional Development
- Educational Resources & Curriculum

Adult and General Programs

- Science in the Mountains Lecture Series
- Winter Overnight Edutrips
- Partner-Led Overnight Climbing Trips

Extreme Mount Washington Museum

- Seasonal (May-October) summit museum

Gladys Brooks Memorial Library

- Mount Washington/White Mountains/MWOBS, books, maps, photographs, records, and more!



Gladys Brooks Memorial Library

Museum Assessment Program (MAP)

OBJECTIVES:

- Review and upgrade the stewardship of our collections.
- Integrating use of collections into exhibits and programs
- Increase audience outreach to promote knowledge of collections and use by other museums, schools, libraries, etc.



Adult & Family Programs

SCIENCE IN THE MOUNTAINS

Twelve monthly lectures, offered for free, saw > 2,000 people attend live programs that featured notable speakers such as Ralph Keeling, Ph.D., and Extreme Meteorologist Reed Timmer.

WINTER EDUTRIPS

A total of 56 lucky participants across 6 trips joined MWOBS staff for an overnight guided adventure. Guests learn from MWOBS staff and other expert instructors such as broadcast meteorologist Eric Fisher.

PARTNER-LED CLIMBING TRIPS

Partners Eastern Mountain Sports, International Mountain Climbing School, Synnott Mountain Guides, and Redline Guides led a total of 24 climbers to the summit weather station for an overnight training experience.

COMMUNITY OUTREACH

Tabling at community events, professional learning for AMC's backcountry staff, and significant involvement in the MWV Youth STEM Expo are just a few ways education staff engaged the community.

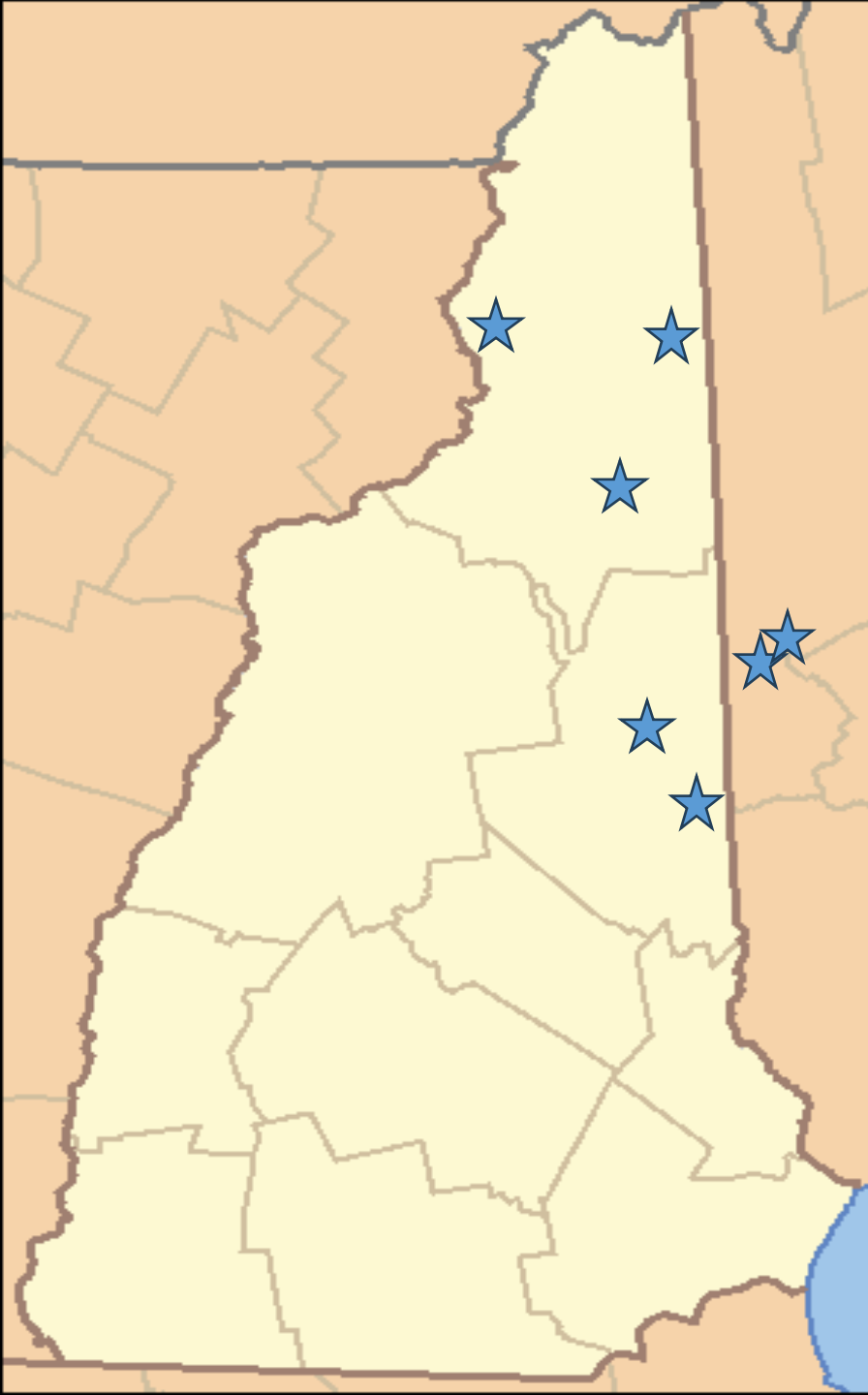


K-12 Student and Teacher Programs

Aligned with Next Generation Science Standards (NGSS), we offer a menu of programs that are also offered at a discounted rate for school members.

PROGRAMS:

- School Visits: Day and After School
- Field Trips
- Virtual Programs
- Professional Development for Educators
- Curriculum & Resources



School Memberships

Building long-term relationships, alongside meaningful learning

Memberships Levels

- Six pairs of teachers join our summit team on a winter shift change day
- Connect live your students while on the summit, shadow weather observations, attend a weather briefing and tour the weather station

List of Schools

- Molly Ockett School & MESA, Fryeburg ME (30 & 10 hours)
- Madison Elementary School (6 hours)
- Berlin Elementary School (15 hours)
- Errol Consolidated School (15 hours)
- Stratford Public School (49 hours)
- Henry Wilson Memorial School (6 hours)

A faded background image showing several people on a paved walkway at the Mount Washington Observatory. A man in a light blue jacket with 'EASTERN MOUNTAIN' on the sleeve is in the foreground. Other people are visible behind him, and a large observation tower is in the background.

Take your learning to new heights!

Summit Field Trips (May-October)

MWOBS Educators coordinate and accompany
Travel on Mount Washington Cog Railway or Auto Road

Field Trip Themes:

- Extreme Weather Observations
- Climate Zones of Mount Washington
- Climate Change on Mount Washington

Winter Field Trips (December-March)

MWOBS Educators coordinate and accompany
Travel to tree line on the Mount Washington Cog Railway or Auto
Road

Field Trip Themes:

- Extreme Weather Observations
- Climate Zones of Mount Washington
- Community Snow Observations

A background image on the right side of the slide showing a person in a black jacket and gloves taking a selfie with a smartphone. They are standing on a wooden railing overlooking a vast mountain landscape under a blue sky with some clouds.

Field Trips

Summit Field Trips (May-October)



Winter Field Trips (December-March)



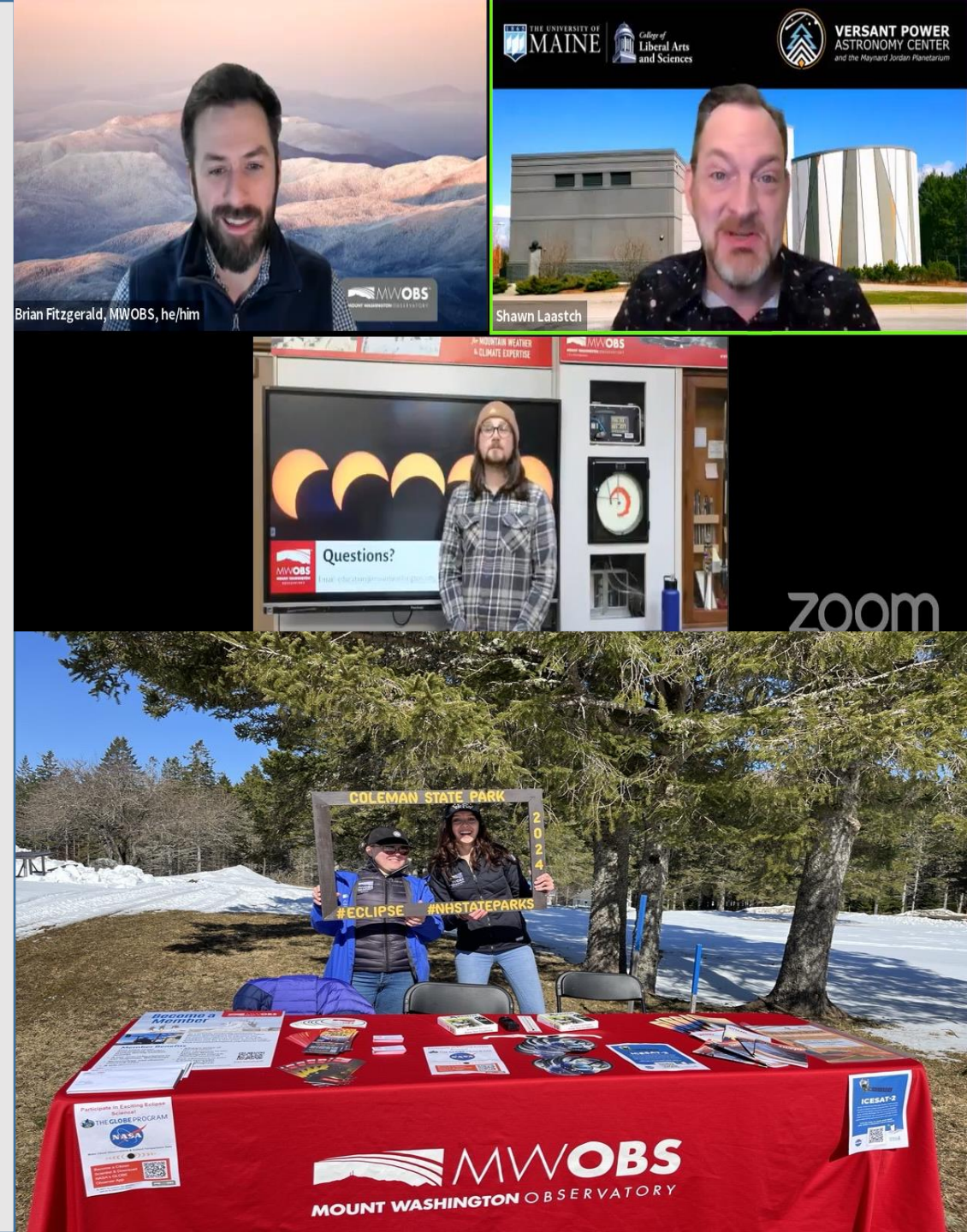
2024 Eclipse

K-12 SCHOOL PROGRAMS:

- Two school day programs:
 - Pine Tree Elementary, Conway, NH: 200 students
 - Berlin Elementary, Berlin, NH: 80 students
- Distance Learning Programs:
 - 12 programs for 638 K-12 students
- **Total K-12 participants: 918 students**

ADULT & FAMILY PROGRAMS

- Two free Science in the Mountains Programs:
 - October hybrid program: 80 in person, 94 virtually
 - April virtual program: 249 attendees
- NASA Citizen CATE project coordination for New Hampshire
- OMNI Mount Washington Hotel Programs
- Eclipse Viewing Part at Coleman State Park!



Looking Ahead

MWOBS will develop and implement innovative education programs and resources, building toward recognition as the go-to state and regional experts in weather and climate.

OBJECTIVES:

- **Develop an interpretive plan** to inform all educational activities of the Observatory.
- **Develop K-12, school-day, after-school, field trip, and professional development programs** based upon assessment of this audience.
- **Continue a cycle of evaluation and updating of K-12 and adult programs** and resources as needed based upon an annual assessment.
- **Build and maintain appropriate educational program staff capacity.**
- Review, prioritize, and where appropriate, **implement MAP report recommendations within our library, collections, museum exhibits, and educational programs.**
- **Increase access to MWOBS educational resources and programs** through expansion of current and new program efforts.



Thank You! Contact us at education@mountwashington.org